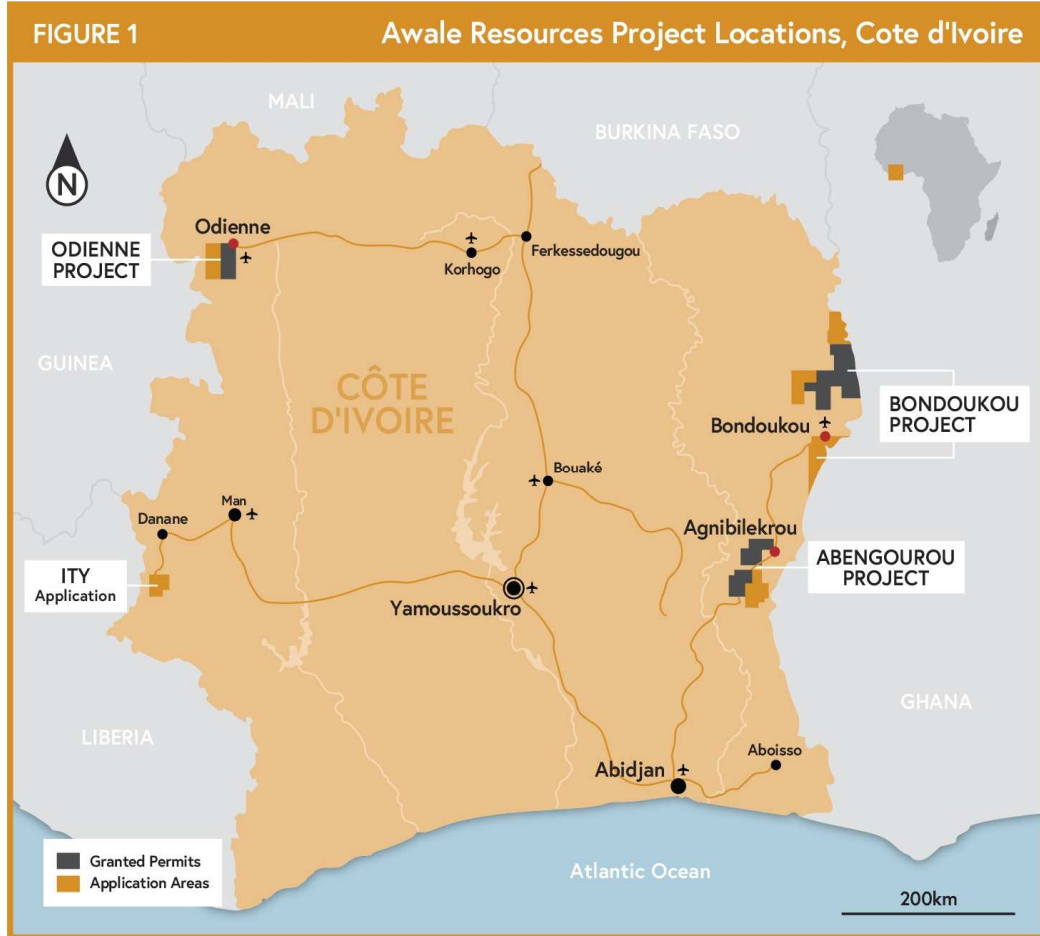
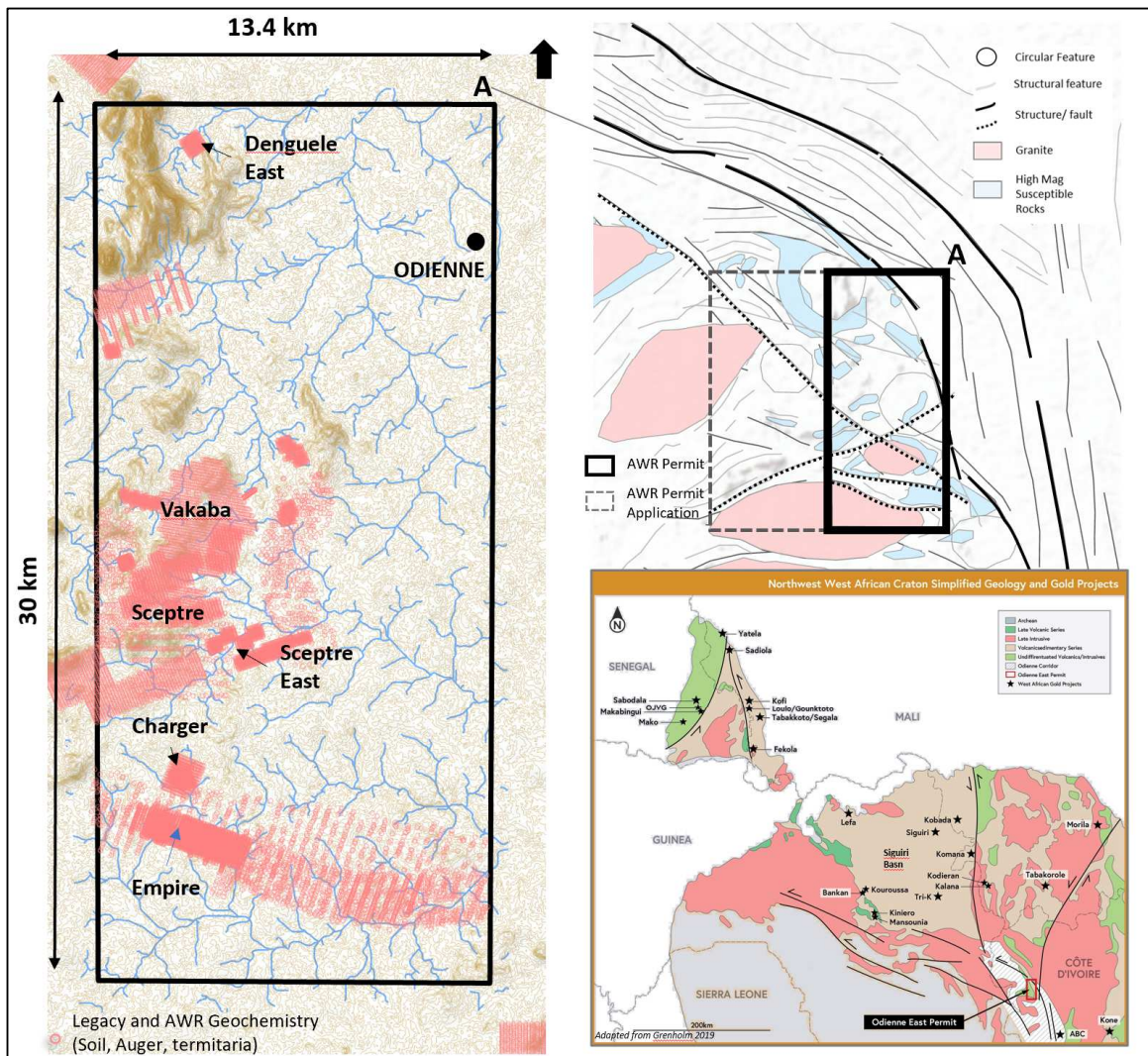


**Awalé Resources Delineates Significant Surface Copper/Gold Anomalies at the Odienné Project, Côte d'Ivoire**

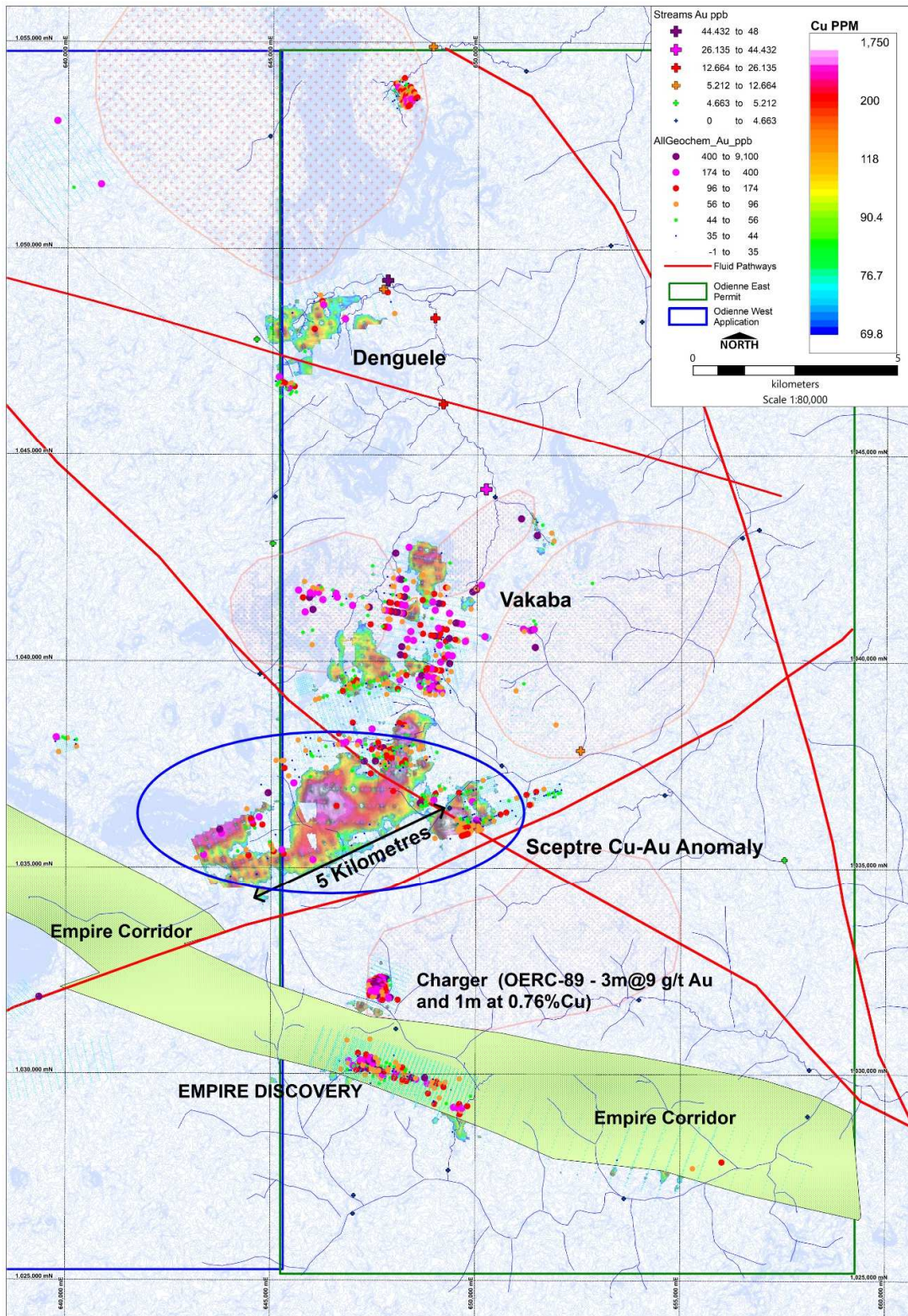


*Figure 1: Awalé Resources project locations*



**Figure 2:** Odienné Project regional geology and geochemistry sample points (left). Upper right is camp scale aerial magnetic interpretation, and the lower right image shows the location of the Odienné project within the northwest west African Craton





**Figure 3: Soil and termitaria sampling gold thematic map (points in ppb) over gridded Copper**