

## Awalé Resources intercepts High Grade Mineralization in Scout Drilling at the Charger Prospect

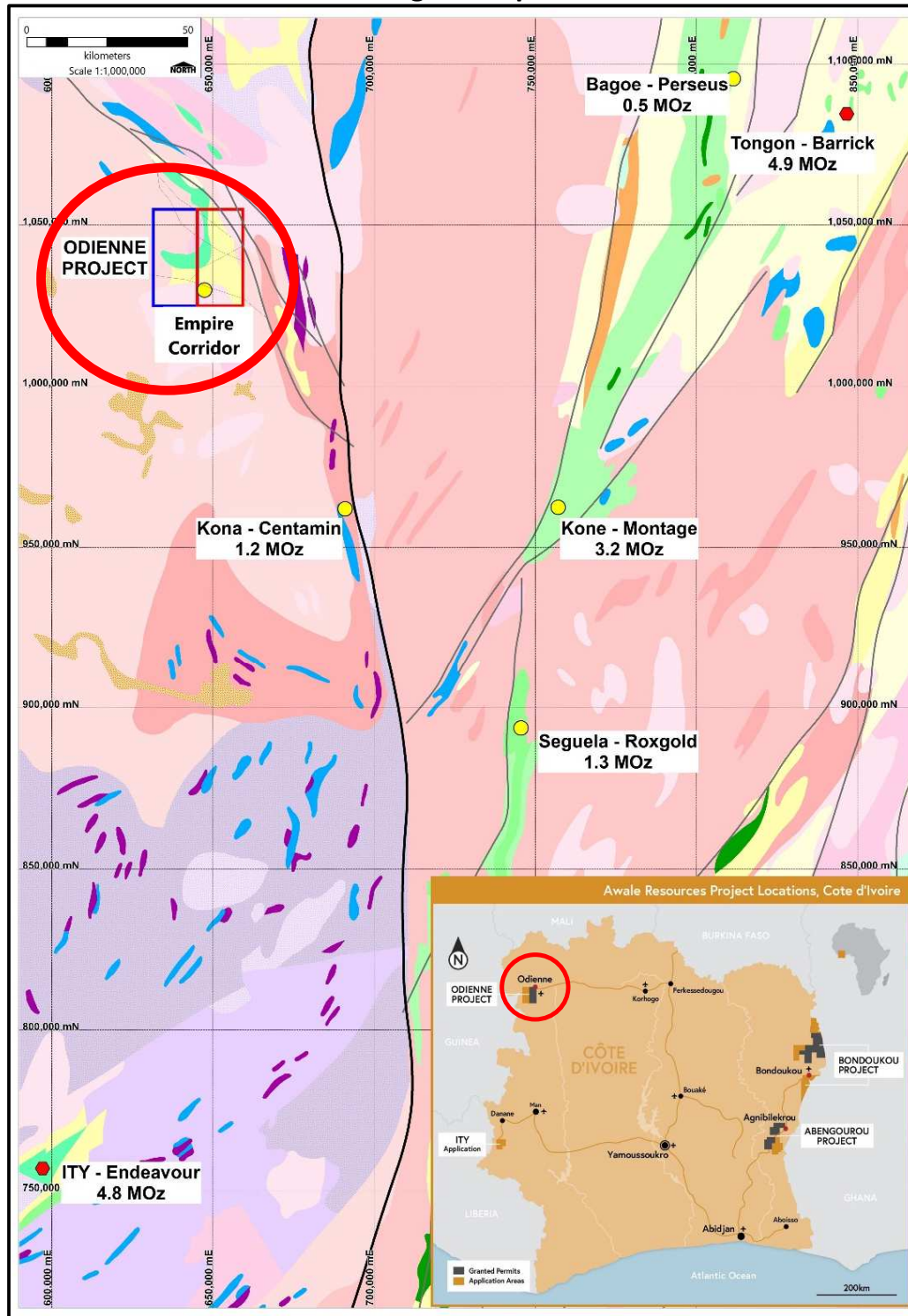
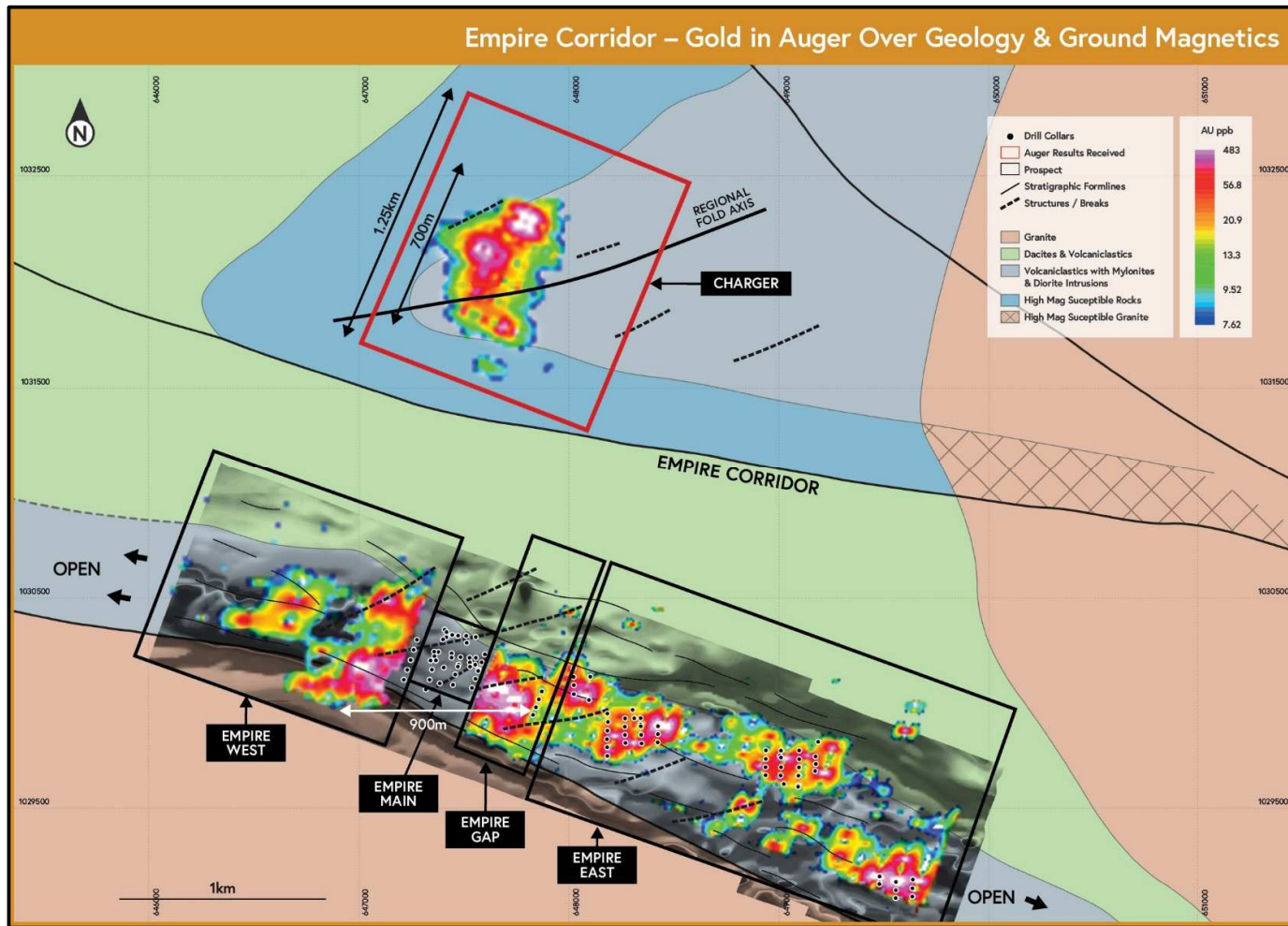
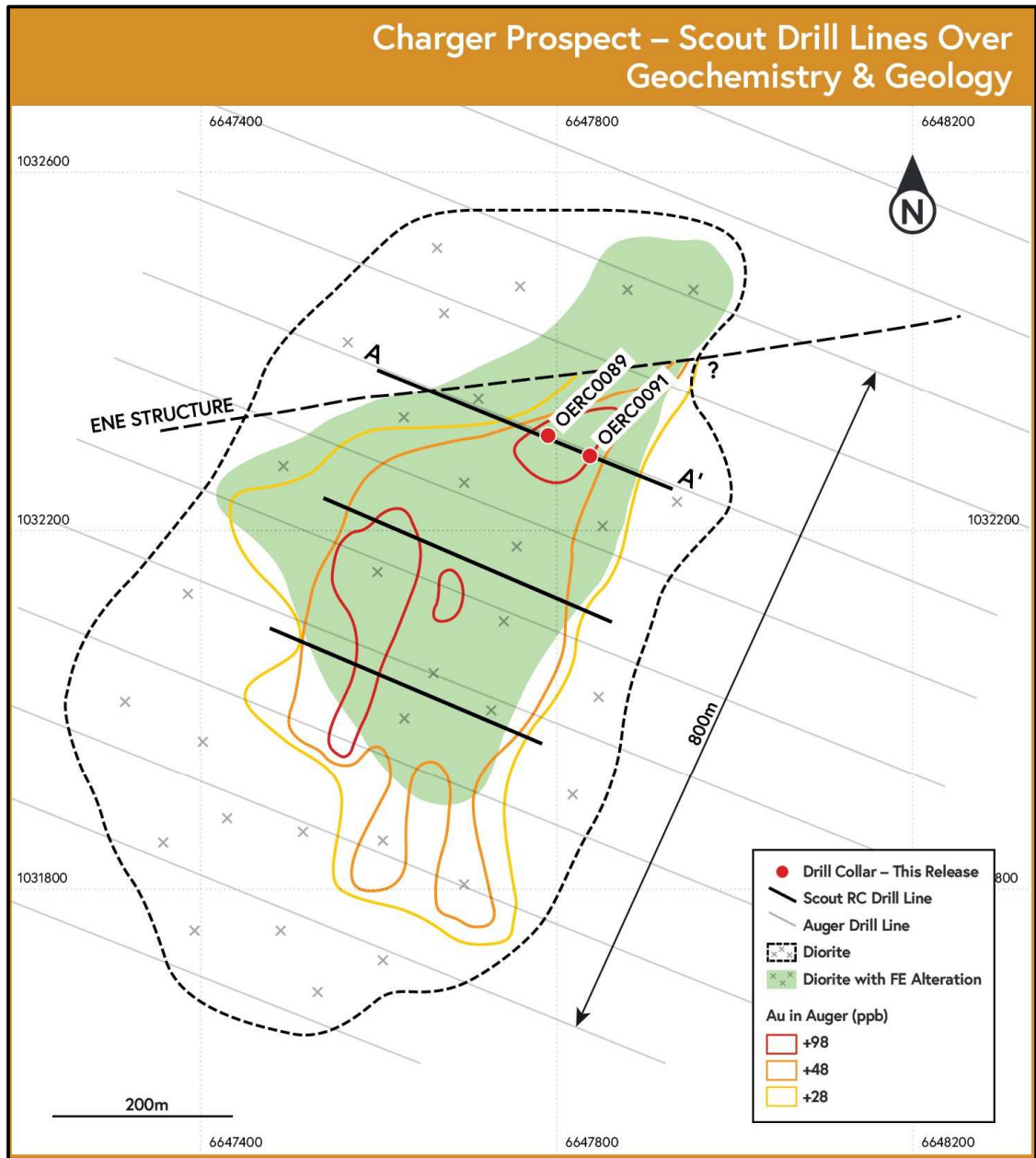


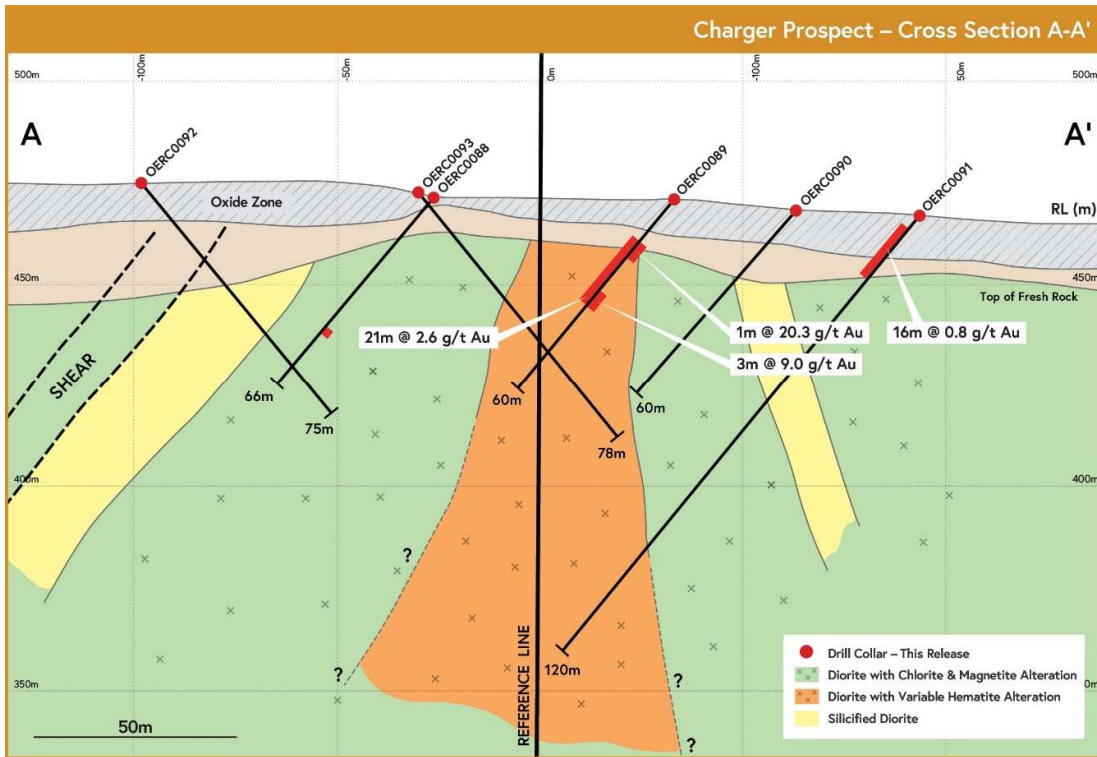
Figure 1: Awale Resources Odienne Project Location



**Figure 2: The Empire Corridor Showing Charger (See Figure 3) and Empire Targets**

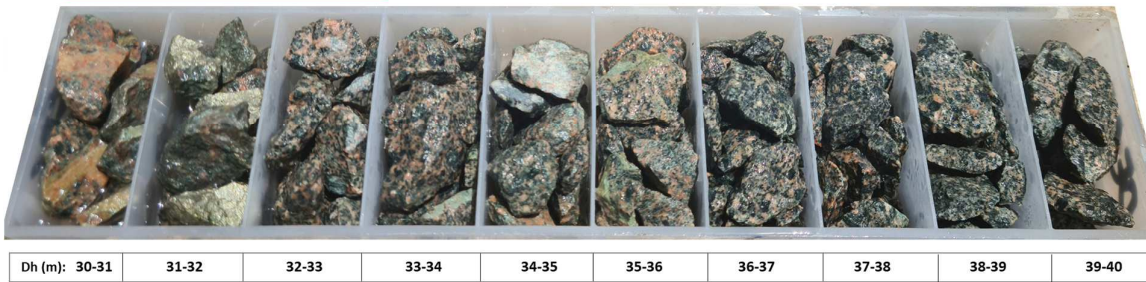


**Figure 3: Plan Map - Charger showing RC scout drill lines over geology and auger geochemistry**



**Figure 4: Cross Section A-A' Showing Intercepts in hole OERC-89 and OERC-91**

**3m @ 9g/t from 30m**



**Figure 5: Photo of drill chips from high grade mineralisation in OERC-89 – 3m at 9 g/t Au from 30m. Chips display mod to strong hematite+/- chlorite alteration.**